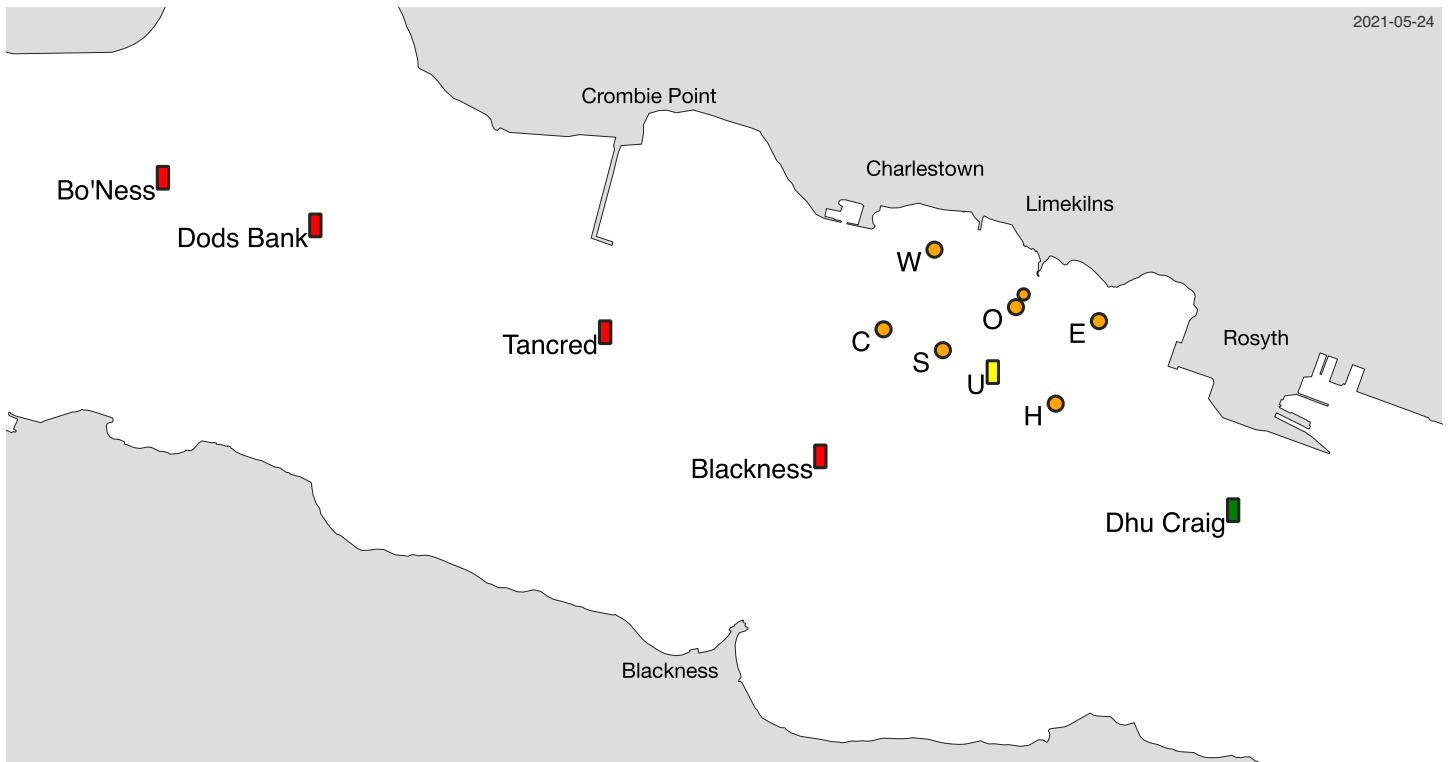


# Forth Cruising Club – 2021 Race Courses

2021-05-24



## West Courses

- W1 tancred - h - e - o - c - h - o - w - h - e - o
- W2 c - e - c - u - e - o - c - e - c - o
- W3 c - h - e - o - c - h - o - w - h - o
- W4 C - W - h - o - c - e - o - h - e - o
- W5 c - blackness - e - o - c - h - e - o - w - h - o
- W6 c - h - o - c - h - o - w - h - e - o
- W7 w - h - e - o - w - h - o - w - h - e - o
- W8 w - bo'ness - blackness - h - e - o
- W9 w - dods bank - blackness - h - e - o
- W10 S - C - O - C - O
- W11 c - blackness - o - u - o - c - blackness - o - u - o - u - o
- W12 s - blackness - s - blackness - o - s - blackness - o
- W13 w - s - w - s - o - w - s - o
- W14 w - c - s - o - s - o - w - c - s - o
- W15 c - s - e - o - c - o - c - s - e - o - c - O
- W16 w - o - e - c - e - o - c - o - c - O
- W17 w - e - o - w - o - w - O

## East Courses

- E1 E - H - W - O - E - W - O - E - H - W - O
- E2 E - H - W - O - BLACKNESS - O - E - H - W - O
- E3 DHU CRAIG - TANCREED - O - E - H - W - O
- E4 E - BLACKNESS - W - O - E - H - W - O - E - H - W - O
- E5 E - BLACKNESS - e - o - s - e - o - s - e - o
- E6 E - c - h - W - O - E - c - h - W - O - H - W - O
- E7 E - C - O - E - H - O - E - H - W - O
- E8 E - H - BLACKNESS - BO'NESS - W - O
- E9 E - H - BLACKNESS - DODS BANK - W - O
- E10 E - U - E - U - O - E - U - O
- E11 E - C - O - E - C - O - C - O
- E12 E - H - U - O - U - O - E - H - U - O

Courses will be displayed with a letter and numbers in the FCC starter's hut window. The starting line is between the mast in front of the starter's hut and the outer distance mark O and is limited by inner distance mark N. Boats must start and finish between the outer distance mark O and the inner distance mark N.

Direction of rounding: leave marks in **red/lowercase** to port, in **GREEN/UPPERCASE** to starboard

Name	Description	Location	Name	Description	Location
<b>Blackness</b>	Port Channel Mark	56° 01.064'N 3° 30.314'W	<b>N</b>	Start Inner	56° 01.737'N 3° 28.844'W
<b>Bo'Ness</b>	Port Channel Mark	56° 02.222'N 3° 35.205'W	<b>O</b>	Start Outer	56° 01.684'N 3° 28.901'W
<b>C</b>	Orange FCC Buoy	56° 01.592'N 3° 29.886'W	<b>S</b>	Orange FCC Buoy	56° 01.505'N 3° 29.444'W
<b>Dhu Craig</b>	Starboard Channel Mark	56° 00.840'N 3° 27.243'W	<b>Tancred</b>	Port Channel Mark	56° 01.580'N 3° 31.915'W
<b>Dods Bank</b>	Port Channel Mark	56° 02.024'N 3° 34.071'W	<b>U</b>	Yellow Sewage Outfall Mark	56° 01.414'N 3° 29.031'W
<b>E</b>	Orange FCC Buoy	56° 01.626'N 3° 28.283'W	<b>W</b>	Orange FCC Buoy	56° 01.923'N 3° 29.507'W
<b>H</b>	Orange FCC Buoy	56° 01.283'N 3° 28.605'W			